

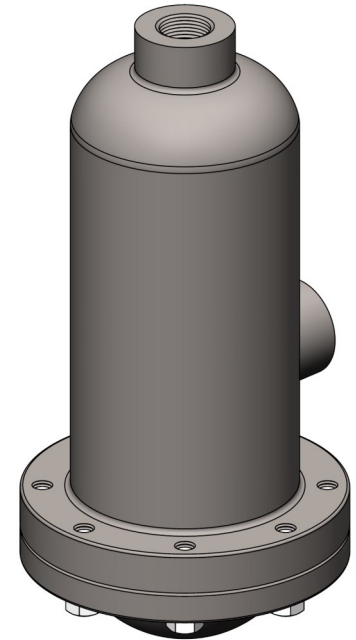


## C-100 Gas Filter Chlorine or Sulfur Dioxide

Impurities are inherent in chlorine and sulfur dioxide gas. A gas filter will aid in the removal of these nuisance causing impurities, keeping downstream equipment cleaner and less prone to failure.

Impurities will always precipitate out of gas if it re-liquefies. This is a common occurrence at points where there is a sudden pressure drop or varying temperatures.

The filter has two chambers. The lower portion acts as a trap for liquid impurities. The sudden enlargement decreases the velocity so that gas is unable to carry entrained droplets of liquid  $\text{Cl}_2$  which is high in Ferric Chloride or liquid  $\text{SO}_2$ . The upper portion has a removable filter cartridge. The filter element removes impurities as the gas passes through the element. Thusly the C-100 acts as both a filter and a condensate trap.



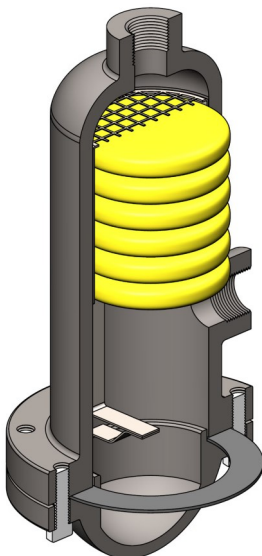
### Basic Specifications

- Connections: 1" NPT inlet / outlet
- Filter Media: Fiberglass
- The C-100 gas filter is made of 25,000 lbs. tensile strength grey iron castings and is rated at 560 PSI working pressure.

### Application & Mounting

The C-100 gas filter should be used on any gas feed installation using one ton cylinders, bulk gas supply or evaporators; regardless of feed capacity.

The filter may be directly mounted to the gas pipeline provided the piping is adequately supported before and after the filter. It is recommended to install manifold unions at the inlet and outlet of the gas filter. Allow sufficient clearance below the filter for filter pad replacement.



### Ordering Information

Part Number	Description
C-100	Gas Filter (Chlorine or Sulfur Dioxide, 1" NPT inlet / outlet)
C-100I	Filter Insert
C-100P	Filter Pads (Set of six (6) filter pads)
C-100G	Lead Gasket
C-100HB	Hex Bolts (Set of eight (8) bolts)

